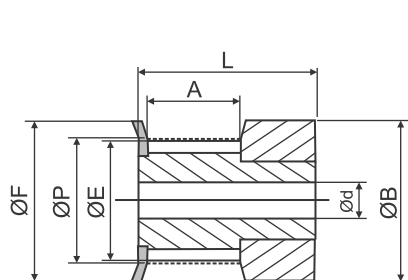
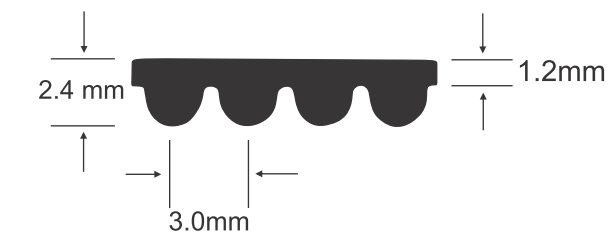
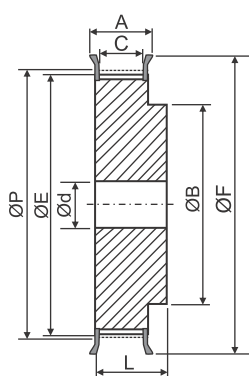


## 3M-09 Series

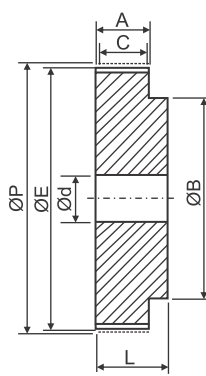
فرم تسمه



شکل 1F



شکل 6F



شکل 6



3M با گام ۳ میلیمتر برای تسمه با پهنای ۹ میلیمتر

Unit : mm

| Part No. | Teeth No. | Fig. | ØP    | ØE    | ØF   | A    | C  | L    | ØB   | Ød | Flange        | Material  |
|----------|-----------|------|-------|-------|------|------|----|------|------|----|---------------|-----------|
| 10-3M-09 | 10        | 1F   | 9.55  | 8.79  | 13   | 10.2 | 9  | 17.5 | 13   | -  | 13.0x6.0x0.5  | Aluminium |
| 12-3M-09 | 12        | 1F   | 11.46 | 10.70 | 15   | 10.2 | 9  | 17.5 | 15   | -  | 15.0x8.0x0.5  |           |
| 14-3M-09 | 14        | 1F   | 13.37 | 12.61 | 16   | 10.2 | 9  | 17.5 | 16   | -  | 16.0x9.5x0.5  |           |
| 15-3M-09 | 15        | 1F   | 14.32 | 13.56 | 17.5 | 10.2 | 9  | 17.5 | 17.5 | -  | 17.5x10.5x0.5 |           |
| 16-3M-09 | 16        | 6F   | 15.28 | 14.52 | 17.5 | 12.8 | 10 | 20.6 | 10   | -  | 17.5x11.6x0.5 |           |
| 18-3M-09 | 18        | 6F   | 17.19 | 16.43 | 20   | 12.8 | 10 | 20.6 | 10.6 | -  | 20.0x12.2x0.5 |           |
| 20-3M-09 | 20        | 6F   | 19.10 | 18.34 | 23   | 12.8 | 10 | 20.6 | 12.4 | -  | 23.0x14.0x0.5 |           |
| 21-3M-09 | 21        | 6F   | 20.05 | 19.29 | 25   | 12.8 | 10 | 20.6 | 13   | -  | 25.0x15.0x0.5 |           |
| 22-3M-09 | 22        | 6F   | 21.01 | 20.25 | 25   | 12.8 | 10 | 20.6 | 13   | -  | 25.0x15.0x0.5 |           |
| 24-3M-09 | 24        | 6F   | 22.92 | 22.16 | 25   | 12.8 | 10 | 20.6 | 13   | -  | 25.0x15.0x0.5 |           |
| 26-3M-09 | 26        | 6F   | 24.83 | 24.07 | 28   | 12.8 | 10 | 20.6 | 16   | -  | 28.0x20.0x0.5 |           |
| 28-3M-09 | 28        | 6F   | 26.74 | 25.98 | 32   | 12.8 | 10 | 20.6 | 18   | -  | 32.0x23.0x0.5 |           |
| 30-3M-09 | 30        | 6F   | 28.65 | 27.89 | 32   | 12.8 | 10 | 20.6 | 20   | -  | 32.0x23.0x0.5 |           |
| 32-3M-09 | 32        | 6F   | 30.56 | 29.80 | 36   | 12.8 | 10 | 20.6 | 22   | -  | 36.0x25.0x0.5 |           |
| 36-3M-09 | 36        | 6F   | 34.38 | 33.62 | 39   | 13.4 | 10 | 22.2 | 26   | -  | 39.0x28.0x0.5 |           |
| 40-3M-09 | 40        | 6F   | 38.20 | 37.44 | 42   | 13.4 | 10 | 22.2 | 28   | -  | 42.0x30.5x0.5 |           |
| 44-3M-09 | 44        | 6F   | 42.02 | 41.26 | 48   | 13.4 | 10 | 22.2 | 33   | -  | 48.0x37.0x0.5 |           |
| 48-3M-09 | 48        | 6    | 45.84 | 45.08 | -    | 13.4 | 10 | 22.2 | 33   | 8  | -             |           |
| 60-3M-09 | 60        | 6    | 57.30 | 56.54 | -    | 13.4 | 10 | 22.2 | 33   | 8  | -             |           |
| 72-3M-09 | 72        | 6    | 68.75 | 67.99 | -    | 13.4 | 10 | 22.2 | 33   | 8  | -             |           |