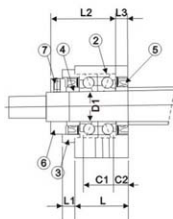
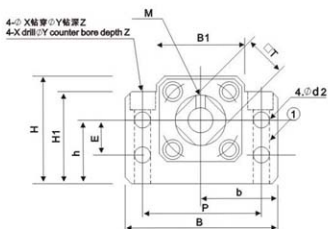
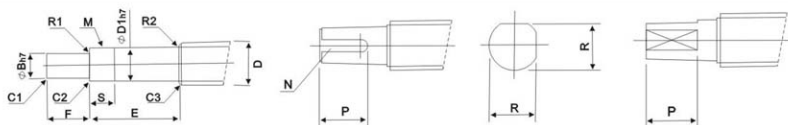




编号/Park No.	部品名称/Park name	数量/Qty
1	轴承座本体/Housing	1
2	轴承/Bearing	组/1 set
3	压板/Holding lid	1
4	间隔圈/Collear	2
5	轴封/Seal	2
6	铁固螺帽/Lock nut	组/1 set
7	内六角止付螺丝附铜片 Hexagon socket-head Setscrew(with set piece)	1



型号 Model No.	轴径 Shaft diameter d1	L	L1	L2	L3	B	H	b	h	B1	H1	E	P	C1	C2	d2	X	Y	Z	M	T
								±0.02	±0.02												
BK12	12	25	6	29	5	60	43	30	25	35	32.5	18	46	13	6	5.5	6.6	11	1.5	M3	19
BK15	15	27	6	32	6	70	48	35	28	40	38	18	54	15	6	5.5	6.6	11	6.5	M3	22
BK17	17	35	9	44	7	86	64	43	39	50	55	28	68	19	8	6.6	9	14	8.5	M4	24
BK20	20	35	8	43	8	88	60	44	34	52	50	22	70	19	8	6.6	9	14	8.5	M4	30
BK25	25	42	12	54	9	106	80	53	48	64	70	33	85	22	10	9	11	17.5	11	M5	35
BK30	30	45	14	61	9	128	89	64	51	76	78	33	102	23	11	11	14	20	13	M6	40
BK35	35	50	14	67	12	140	96	70	52	88	79	35	114	26	12	11	14	20	13	M8	50



型号 MODEL NUMBER BK型	适用轴杆外径 Ball screw outside diameter D	D1	B	E	F	M	S	倒角 Chamfer			圆角半径 Radius		H1 键槽(宽×深×深) KEYWAY DIMENSION		H2		型号 MODEL NUMBER BK型
								C1	C2	C2	R1	R2	MAX	N	P	R	
BK-12	φ14、φ15、φ16、φ18	12	10	39	15	M12X4	14	0.5	0.5	0.5	0.3	0.3	3x1.8	12	9.5	12	BK-12
BK-15	φ18、φ20	15	12	40	20	M15X1	12	0.5	0.5	0.5	0.3	0.3	4x2.5	16	11.3	16	BK-15
BK-17	φ20、φ25	17	15	53	23	M17X1	17	0.5	0.5	0.5	0.3	0.3	5x3.0	21	14.3	21	BK-17
BK-20	φ25、φ28	20	16	53	25	M20X1	15	0.5	0.5	0.5	0.3	0.3	5x3.0	21	16	21	BK-20
BK-25	φ32、φ36	25	20	65	30	M25X1.5	18	0.5	0.7	1.0	0.5	0.5	6x3.5	25	19	25	BK-25
BK-30	φ36、φ40	30	25	72	38	M30X1.5	25	0.5	0.7	1.0	0.5	0.5	8x4.0	32	23.5	32	BK-30
BK-35	φ40、φ45、φ50	35	30	83	45	M35X1.5	28	0.5	1.0	1.0	0.5	0.5	8x4.0	40	28.5	40	BK-35

**cncsanatjahan.com**

**021-33940627**

**09101359566**