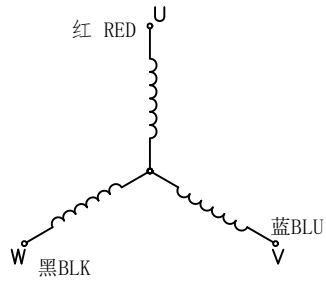
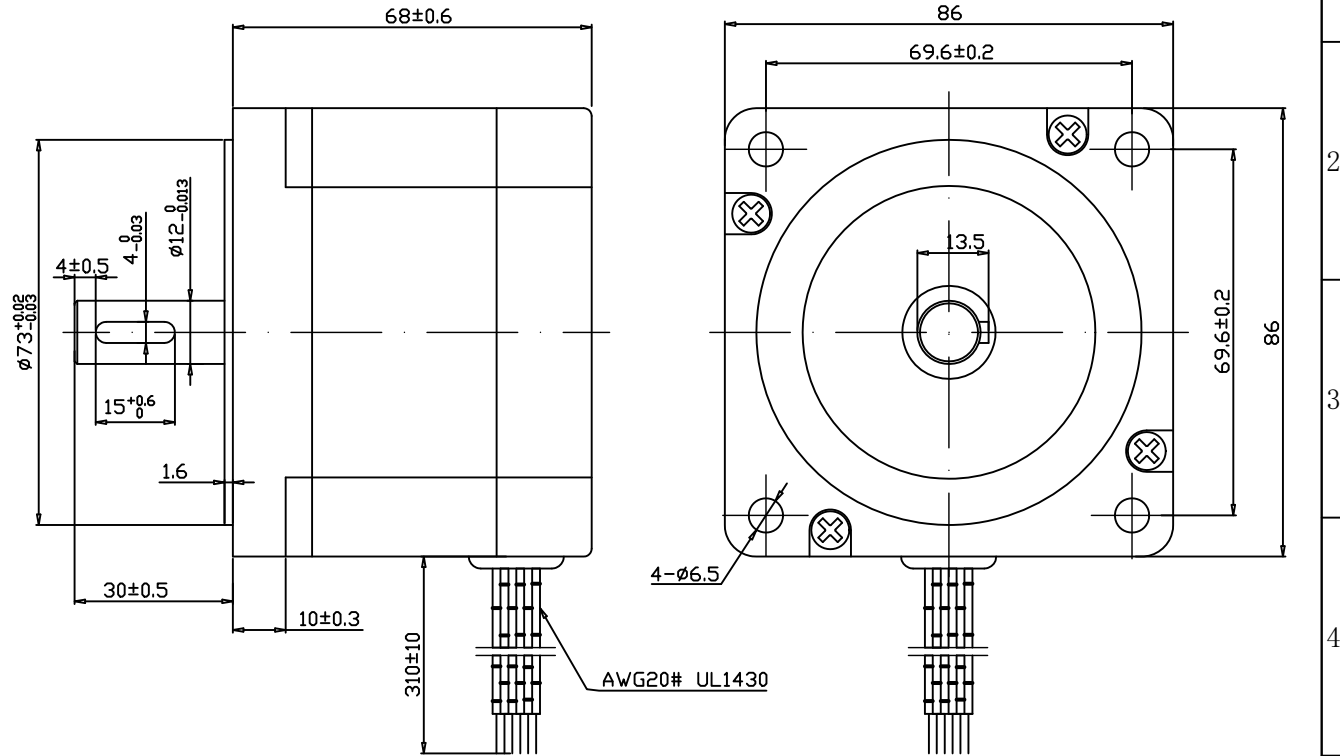


接线图
Wiring Diagram




规格 SPECIFICATIONS

1	相数 Number of Phase	3
2	步距角 Step Angle	1.2° ± 5%
3	保持力矩 Holding Torque	22 kg. cm
4	电压 Voltage	4.3 VDC
5	电流 Current	5.8 A
6	线电阻 Wire Resistance (20°C)	0.4 ± 10% Ω
7	线电感 Wire Inductance (1KHz)	1.2 ± 20% mH
8	转子惯量 Rotor Inertia	1480g · cm ²
9	绝缘电阻 Insulation Resistance	100M Ω 500VDC
10	绝缘等级 Insulation Class	B (130°C)
11	环境温度 Ambient Temperature	-20°C to 50°C
12	环境湿度 Ambient Humidity	15% to 95%
13	电机重量 Motor Weight	Approx 2.0 kg
14		



NOTE: This document is released for information only. Its reproduction in whole or in part or its dissemination to third parties is prohibited. Unless otherwise specified all trademarks and registered trademarks appearing on this document are the property of changzhou chuangwei motor & electric apparatus co., ltd.

		Unit: mm 第一角画法 First angle method 未注线性与角度尺寸公差 Tolerances for linear and angular dimensions without individual tolerance indications GB/T 1804-m eqv ISO 2768-1:m 未注形状与位置尺寸公差 Geometrical tolerances for features without individual tolerance indications GB/T 1184-k eqv ISO 2768-2:k		设计 DESIGN	Xie	20181023	CW-motor  常州创伟电机电器有限公司 Changzhou Chuangwei Motor & Electric Apparatus Co., Ltd
				校核 CHECK			
				工艺 TECHNOLOGY			TYPE: HYBRID STEPPING MOTOR
				标准化 STANDARD			SCALE XX
				批准 APPROVE			Rev. 1.0
VI.0		YJ1809082		20181023		SHEET 1 OF 1	
REV.		版本记录 REVISION RECORD		DATE		UNLESS OTHERWISE SPECIFIDE	
				NAMES		SIGNATURE	
				DATE		Model: 86BHP68-580Y-Y30J	